



Cas 2381089-83-2 Retatrutide (LY-3437943) Reta 2mg/5mg/10mg/12mg

Our Product Introduction

for more products please visit us on peptide-powder.com

Basic Information

- Place of Origin: China
- Brand Name: Hongbaiyi
- Certification: COA, HPLC MR
- Model Number: HBY-Retatrutide
- Minimum Order Quantity: 5 boxes
- Price: Negotiable
- Packaging Details: 10mg/vial, 10vials/box
- Delivery Time: 3-5 work days after your payment
- Payment Terms: T/T, MoneyGram, Western Union
- Supply Ability: 20,000boxes/Month

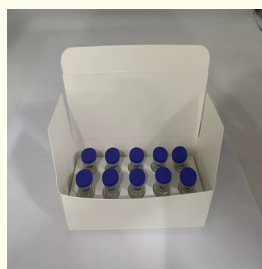


Product Specification

- Name: Reta 12mg For Sale
- CAS: 2381089-83-2
- MW: 4845.444
- MF: C223H343F3N46O70
- Color: White
- Material: Powder
- Specification: 2mg/5mg/10mg/12mg
- MOQ: 5 Boxes



More Images



Product Description

Retatrutide Review

Retatrutide (LY-3437943) powder is a weight loss drug developed by Eli Lilly and Company that is currently in Phase III clinical trials for obesity. It is used to treat type 2 diabetes, obstructive sleep apnea, osteoarthritis, obesity, and non-alcoholic fatty liver disease. Retatrutide peptide is a triple hormone receptor agonist for GLP-1, GIP, and GCGR receptors. By activating these receptors, Retatrutide may help regulate appetite, increase energy expenditure and improve glucose metabolism. This unique mechanism of action of Retatrutide makes Retatrutide raw powder and Retatrutide peptide finished bottles more promising in the weight loss market. Aea.ltd is a professional Retatrutide powder manufacturer in China, which provides high quality Retatrutide raw powder and Retatrutide customized peptide finished bottles at a reasonable price.

Chemical Property:

Product Name:	Retatrutide
CAS No.:	2381089-83-2
Molecular Formula:	C223H343F3N46O70
Molecular Weight:	4845.444
Sequence:	Tyr- (Aib)-Gln-Gly-Thr-Phe-Thr-Ser-Asp-Tyr-Ser-Ile- (α-Me-Leu)-Leu-As Lys- (diacid -C20-gamma-Glu-(AEEA)-Lys)-Ala-Gln- (Aib)-Ala-Phe-Ile-Glu-Tyr-Leu-L Glu-Gly-Gly -Pro-Ser-Ser-Gly-Ala-Pro-Pro-Pro-Ser-NH2
Other names/Synonyms:	LY-3437943
Storage Temp:	Please seal and store at 8°C–20°C

What is the mechanism of action of Ridarutide?

As a triple agonist peptide diet pill to help control obesity, Ridarutide powder targets three different hormones in the body: gastric inhibitory peptide (GIP), glucagon-like peptide-1 (GLP-1), and glucagon.

GIP and GLP-1
Blood Sugar Control

After Ritalin injection, eating food will raise blood sugar, producing GIP and GLP-1, which stimulate insulin secretion and increase insulin levels in the blood, lowering blood sugar and ultimately promoting weight loss.

Reduces Appetite

GLP-1 and GIP also affect appetite. They delay gastric emptying (GE), reducing hunger and increasing satiety, thus reducing food intake and achieving weight loss.

Glucagon

During prolonged periods of no carbohydrate intake (e.g., during sleep, adherence to a low-calorie diet, or intermittent fasting), glucagon promotes the breakdown of glycogen into glucose for energy, which in turn breaks down fat over a period of time, leading to weight loss.

Retatrutide powder works in a similar way to other weight loss medications such as Saxenda, Mounjaro and Wegovy. However, it is influenced by three hormones. This unique mechanism of action provides a multifaceted approach to controlling obesity and type 2 diabetes. By controlling blood glucose levels, delaying gastric emptying and regulating appetite, ritalopeptide powder is expected to be a powerful tool in the fight against obesity and related metabolic disorders.

Retatrutide VS Tirzepatide VS Semaglutide

Items	Semaglutide (Wegovy/Ozempic)	Tirzepatide (Mounjaro)	Retatrutide
Mechanism	GLP-1 receptor agonist	GLP-1 and GIP Receptor agonist	GLP-1, GIP, Glucagon receptor agonist
Dosage range	0.25mg-2.4mg	2.5mg-15mg	1mg-12mg
Weight loss in clinic trial	Wegovy: 14.9% of body weight after 68 weeks Ozempic: 6.1% of body weight after 52 weeks	22.5% of body weight after 72 weeks	22.5% of body weight after 72 weeks
Prices/cost	Semaglutide powder Tirzepatide powder Retatrutide powder		
Effectiveness	Semaglutide powder Tirzepatide powder Retatrutide powder		

Retatrutide In Type 2 Diabetes

Group	Dosage (mg)	Change in HbA1c at 24 weeks (%)	Change in HbA1c at 36 weeks (%)	Weight change (kg)
-------	-------------	---------------------------------	---------------------------------	--------------------

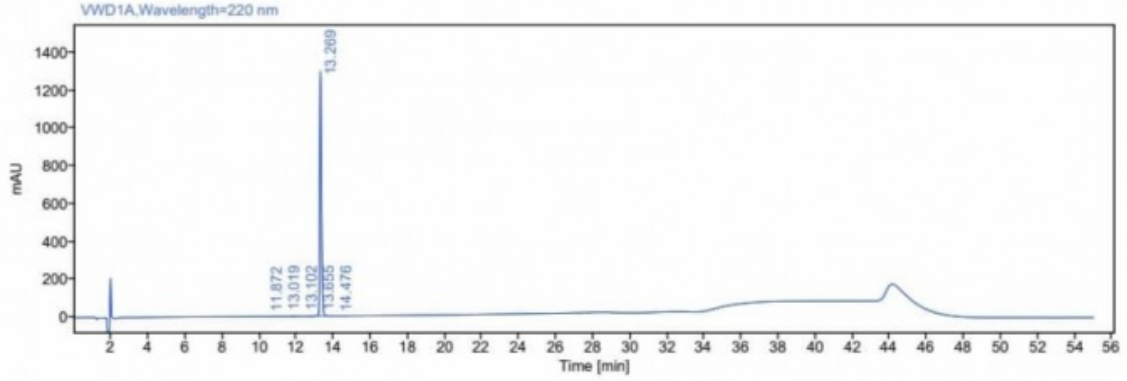
Placebo	0	-0.01 (0.21)	-0.13 (0.25)	-0.54 (0.73)	
Retatrutide	0.5	-0.43 (0.20)	-0.64 (0.26)	-1.45 (0.80)	
Retatrutide	1.5	-1.39 (0.14)	-1.64 (0.19)	-2.78 (0.64)	
Retatrutide	4 (increasing)	-1.30 (0.22)	-1.51 (0.25)	-2.51 (0.71)	
Retatrutide	8 (slowly increasing)	-1.99 (0.15)	-2.28 (0.18)	-3.42 (0.58)	
Retatrutide	8 (rapidly increasing)	-1.88 (0.21)	-2.13 (0.24)	-3.17 (0.67)	
Retatrutide	12	-2.02 (0.11)	-2.36 (0.15)	-3.83 (0.51)	

Product Images:



HPLC:

Data file: 02 RET-23071401-03.dx
Sequence Name: 20230829 **Project Name:** control
Sample name: RET-23071401-03 **Operator:** Dai Yuanke
Instrument: SB-066 **Injection date:** 2023-08-29 14:46:05+08:00
Inj. volume: 10.000 µL **Location:** P2-F2
Acq. method: RET-ZK.amx **Type:** Sample
Processing method: *New method 1.pmx **Manually modified:** None
Data Path /2023/SB-066/RET/control/Results/20230829.rslt



Signal: VWD1A,Wavelength=220 nm

No.	RT [min]	Name	Width [min]	Area	Height	Area%	Resolution
1	11.872		0.27	1.0768	0.18	0.01	
2	13.019		0.39	16.1880	2.86	0.19	
3	13.102		0.09	19.4414	3.79	0.23	
4	13.269		0.48	8295.9250	1293.00	99.30	
5	13.655		0.21	14.6719	2.27	0.18	
6	14.476		0.40	7.5110	0.91	0.09	
		Sum		8354.81			



Shaanxi Hongbaiyi Biotech Co., Ltd.

☎ 18192109180

✉ tracy@sxhongbaiyi.com

🌐 peptide-powder.com

Hengjia Business Building, No.115 Weiyang Road, E&T Development Zone, Xi'an, Shaanxi, China.